

[www.mobiak.com](http://www.mobiak.com)



**UL Certified Products**



CODE 0135261

**MBK12 - 2,5PA - UL**

2.5lb	A B C	1A 10B C
-------	-------	----------------



CODE 0135611

**MBK12 - 2,5PAL - UL**

2.5lb	A B C	1A 10B C
-------	-------	----------------



Fire Extinguisher **2.5lb Dry Powder**  
with One Seam Vessel and Brass Valve.

> **METALLIC BRACKET INCLUDED**

Fire Extinguisher **2.5lb Dry Powder**  
with One Seam Vessel and Aluminum Valve.

> **METALLIC BRACKET INCLUDED**

USCG Certified Only if the Proper Bracket is  
being Used (Sold Separately - 0114139)



CODE 0135262

**MBK12 - 5PA - UL**

5lb	A B C	3A 30B C
-----	-------	----------------



CODE 0135612

**MBK12 - 5PAL - UL**

5lb	A B C	3A 30B C
-----	-------	----------------



Fire Extinguisher **5lb Dry Powder**  
with One Seam Vessel and Brass Valve.

> **METALLIC BRACKET INCLUDED**

Fire Extinguisher **5lb Dry Powder**  
with One Seam Vessel and Aluminum Valve.

> **METALLIC BRACKET INCLUDED**

USCG Certified Only if the Proper Bracket is  
being Used (Sold Separately - 0114140)



CODE 0135263

**MBK12 - 10PA - UL**

10lb	A B C	4A 60B C
------	-------	----------------



CODE 0135613

**MBK12 - 10PAL - UL**

10lb	A B C	4A 60B C
------	-------	----------------



Fire Extinguisher **10lb Dry Powder**  
with One Seam Vessel and Brass Valve.

> **METALLIC BRACKET INCLUDED**

Fire Extinguisher **10lb Dry Powder**  
with One Seam Vessel and Aluminum Valve.

> **METALLIC BRACKET INCLUDED**

USCG Certified Only if the Proper Bracket is  
being Used (Sold Separately - 0114141)



CODE 0135264

**MBK12 - 20PA - UL**

20lb	A B C	6A 80B C
------	-------	----------------



CODE 0135614

**MBK12 - 20PAL - UL**

20lb	A B C	6A 80B C
------	-------	----------------



Fire Extinguisher **20lb Dry Powder**  
with One Seam Vessel and Brass Valve.

> **METALLIC BRACKET INCLUDED**

Fire Extinguisher **20lb Dry Powder**  
with One Seam Vessel and Aluminum Valve.

> **METALLIC BRACKET INCLUDED**

USCG Certified Only if the Proper Bracket is  
being Used (Sold Separately - 0114142)





CODE 0135377

**MBK15 - 5CO - UL**

5lb	CO <sub>2</sub>	2B C
-----	-----------------	---------

Fire Extinguisher **5lb CO<sub>2</sub>** with One Seam Vessel Aluminum with Side Outlet.

> **METALLIC BRACKET INCLUDED**



CODE 0135378

**MBK15 - 10CO - UL**

10lb	CO <sub>2</sub>	10B C
------	-----------------	----------

Fire Extinguisher **10lb CO<sub>2</sub>** with One Seam Vessel Aluminum with Discharge Hose.

> **METALLIC BRACKET INCLUDED**

USCG Certified Only if the Proper Bracket is being Used (Sold Separately - 0114143)



CODE 0135379

**MBK15 - 15CO - UL**

15lb	CO <sub>2</sub>	10B C
------	-----------------	----------

Fire Extinguisher **15lb CO<sub>2</sub>** with One Seam Vessel Aluminum with Discharge Hose.

> **METALLIC BRACKET INCLUDED**

USCG Certified Only if the Proper Bracket is being Used (Sold Separately - 0114143)



CODE 0135380

**MBK15 - 20CO - UL**

20lb	CO <sub>2</sub>	10B C
------	-----------------	----------

Fire Extinguisher **20lb CO<sub>2</sub>** with One Seam Vessel Aluminum with Discharge Hose.

> **METALLIC BRACKET INCLUDED**



CODE 0135489

**MBK19-1.5WC-UL**

1,5gal | WET CHEMICAL | 1A K



Fire Extinguisher **1,5Gal Wet Chemical** with Stainless Steel Vessel and Valve, for A & K Class of Fires.

> METALLIC CYLINDER BRACKET INCLUDED



CODE 0135488

**MBK19-2.5WC-UL**

2,5gal | WET CHEMICAL | 1A K



Fire Extinguisher **2,5Gal Wet Chemical** with Stainless Steel Vessel and Valve, for A & K Class of Fires.

> METALLIC CYLINDER BRACKET INCLUDED



CODE 0135701

**MBK21-2.5GAL-WT-UL**

2,5gal | WATER | 2A



Fire Extinguisher **2,5Gal Water** with Stainless Steel Vessel and Valve for A Class of Fires.

> METALLIC CYLINDER BRACKET INCLUDED



Wall Valve Bracket  
(Optional - Sold Separately)



Wall Cylinder Bracket  
(Included)



Heavy Duty Bracket  
(Optional - Sold Separately)

CODE 0135513



**MBK19-10PA-OVALH-UL**

10 LB | A B C DRY POWDER | 4A 80B C



CODE 0135512

**MBK19-10PA-OVALJ-UL**

10 LB | A B C DRY POWDER | 4A 80B C

**DRY POWDER OVAL**

	10JABC - MR	10HABC - MR
CAPACITY	10 LB (4,6 Kg)	10 LB (4,6 Kg)
WEIGHT	24 LB (11,1 Kg)	22 LB (10,1 Kg)
HEIGHT	56 cm	58 cm
CYLINDERS WIDTH	26 cm	21 cm
TOTAL WIDTH	28 cm	23 cm
DEPTH	8 cm	9 cm

Ideal For Installations On Surfaces, Greatly Thin! Handle, Bracket And Hook Are Stainless Steel. Valve And Nozzle Are Made From Corrosion Resistant Aluminum, Aluminum Cylinder, Includes Hook. With Special Design That Allows The Extinguisher To Rotate While Hang At 90o At Every Dimension Without Falling. It Is Connected To Wall Or Column With One Connector (Connector Is Not Included). Antimagnetic - MRI

**Suitable for Rooms with Magnetic Field.**



CODE 0102240

**MBK14 - ULHOSE - 112**

**1 1/2" 21bar, UL LISTED**

**FIRE HOSES UL LISTED**



Certified Fire Hose, **20m** with Heavy Duty Transparent Inner Lining from Synthetic EPDM, Excellent Performance in Low Temperatures. External Twilled Jacket for Extra Strength in Multiple Stresses. The Type of Certification is Indicated on the Hose.

**Tested One by One!**

**EACH CERTIFIED FIRE HOSE  
IS DELIVERED IN A WHITE CARTON BOX**



CODE 0102241

**MBK14 - ULHOSE - 212**

**1 1/2" 21bar, UL LISTED**

**FIRE HOSES UL LISTED**



Certified Fire Hose, **20m** with Heavy Duty Transparent Inner Lining from Synthetic EPDM, Excellent Performance in Low Temperatures. External Twilled Jacket for Extra Strength in Multiple Stresses. The Type of Certification is Indicated on the Hose.

**Tested One by One!**

**EACH CERTIFIED FIRE HOSE  
IS DELIVERED IN A WHITE CARTON BOX**





## UPRIGHT - UL/ULC



### STANDARD RESPONSE

CODE 0126064

**MBK19-SR-UPRIGHT-57C**

57° / 135°F



### STANDARD RESPONSE

CODE 0126065

**MBK19-SR-UPRIGHT-68C**

68° / 155°F

CODE 0126066

**MBK19-SR-UPRIGHT-79C**

79° / 175°F

CODE 0126067

**MBK19-SR-UPRIGHT-93C**

93° / 200°F

Upright Sprinkler - K 80 - Standard Response Brass or Chrome  
NPT 1/2" or R1/2"



## UPRIGHT - UL/ULC



### QUICK RESPONSE

CODE 0126068

**MBK19-QR-UPRIGHT-57C**

57° / 135°F



### QUICK RESPONSE

CODE 0126069

**MBK19-QR-UPRIGHT-68C**

68° / 155°F

CODE 0126070

**MBK19-QR-UPRIGHT-79C**

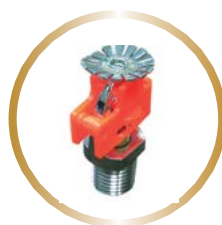
79° / 175°F

CODE 0126071

**MBK19-QR-UPRIGHT-93C**

93° / 200°F

Upright Sprinkler - K 80 - Quick Response Brass or Chrome  
NPT 1/2" or R1/2"



ALL SPRINKLERS ARE PROVIDED  
WITH A PLASTIC PROTECTIVE CASE.  
YOU HAVE TO REMOVE IT AFTER  
INSTALLATION.



## RECESSED - UL/ULC



### STANDARD RESPONSE

CODE 0126072

**MBK19-SR-CONCEALED-57C**

57° / 135°F



### STANDARD RESPONSE

CODE 0126073

**MBK19-SR-CONCEALED-68C**

68° / 155°F

CODE 0126074

**MBK19-SR-CONCEALED-79C**

79° / 175°F

CODE 0126075

**MBK19-SR-CONCEALED-93C**

93° / 200°F

Concealed Sprinkler - Pendant - Standard Response - Brass or Chrome  
NPT 1/2" or R1/2"



## RECESSED - UL/ULC



### QUICK RESPONSE

CODE 0126076

**MBK19-QR-CONCEALED-57C**

57° / 135°F



### QUICK RESPONSE

CODE 0126077

**MBK19-QR-CONCEALED-68C**

68° / 155°F

CODE 0126078

**MBK19-QR-CONCEALED-79C**

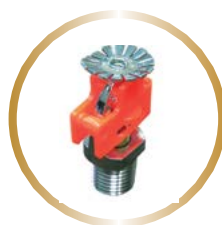
79° / 175°F

CODE 0126079

**MBK19-QR-CONCEALED-93C**

93° / 200°F

Concealed Sprinkler - Pendant - Quick Response - Brass or Chrome  
NPT 1/2" or R1/2"



ALL SPRINKLERS ARE PROVIDED  
WITH A PLASTIC PROTECTIVE CASE.  
YOU HAVE TO REMOVE IT AFTER  
INSTALLATION.

## PENDENT - UL/ULC



### STANDARD RESPONSE

CODE 0126080

**MBK19-SR-PENDENT-57C**

57° / 135°F



### STANDARD RESPONSE

CODE 0126081

**MBK19-SR-PENDENT-68C**

68° / 155°F

CODE 0126082

**MBK19-SR-PENDENT-79C**

79° / 175°F

CODE 0126083

**MBK19-SR-PENDENT-93C**

93° / 200°F

Pendent Sprinkler - K 80 - Standard Response Brass or Chrome  
NPT 1/2" or R1/2"

## PENDENT - UL/ULC



**PENDENT  
SPRINKLERS ARE  
INSTALLED BELOW  
THE PIPES. UPRIGHT  
SPRINKLERS ARE  
INSTALLED ABOVE  
THE PIPES**

### QUICK RESPONSE

CODE 0126084

**MBK19-QR-PENDENT-57C**

57° / 135°F



### QUICK RESPONSE

CODE 0126085

**MBK19-QR-PENDENT-68C**

68° / 155°F

CODE 0126086

**MBK19-QR-PENDENT-79C**

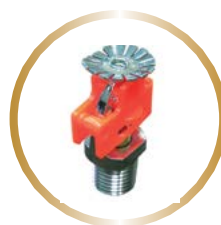
79° / 175°F

CODE 0126087

**MBK19-QR-PENDENT-93C**

93° / 200°F

Upright Sprinkler - K 80 - Quick Response Brass or Chrome  
NPT 1/2" or R1/2"



**ALL SPRINKLERS ARE PROVIDED  
WITH A PLASTIC PROTECTIVE CASE.  
YOU HAVE TO REMOVE IT AFTER  
INSTALLATION.**





## HORIZONTAL SIDEWALL UL/ULC



### STANDARD RESPONSE

CODE 0126088

**MBK19-SR-HORIZONTAL-57C**

57° / 135°F



### STANDARD RESPONSE

CODE 0126090

**MBK19-SR-HORIZONTAL-68C**

68° / 155°F

CODE 0126092

**MBK19-SR-HORIZONTAL-79C**

79° / 175°F

CODE 0126094

**MBK19-SR-HORIZONTAL-93C**

93° / 200°F

Horizontal Sidewall - K 80 - Standard Response Brass or Chrome  
NPT 1/2" or R1/2"



## HORIZONTAL SIDEWALL UL/ULC



### QUICK RESPONSE

CODE 0126089

**MBK19-QR-HORIZONTAL-57C**

57° / 135°F



### QUICK RESPONSE

CODE 0126091

**MBK19-QR-HORIZONTAL-68C**

68° / 155°F

CODE 0126093

**MBK19-QR-HORIZONTAL-79C**

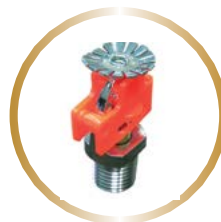
79° / 175°F

CODE 0126095

**MBK19-QR-HORIZONTAL-93C**

93° / 200°F

Upright Sprinkler - K 80 - Quick Response Brass or Chrome  
NPT 1/2" or R1/2"



ALL SPRINKLERS ARE PROVIDED  
WITH A PLASTIC PROTECTIVE CASE.  
YOU HAVE TO REMOVE IT AFTER  
INSTALLATION.

## UPRIGHT UL/FM/ULC



### STANDARD RESPONSE

CODE 0126105

**MBK21-SR-UPRIGHT-57C**

57° / 135°F



### STANDARD RESPONSE

CODE 0126106

**MBK21-SR-UPRIGHT-68C**

68° / 155°F

CODE 0126107

**MBK21-SR-UPRIGHT-93C**

93° / 200°F

Pendent Sprinkler - K 80 - Standard Response Brass or Chrome  
NPT 1/2" or R1/2"

## UPRIGHT UL/FM/ULC



### QUICK RESPONSE

CODE 0126108

**MBK21-QR-UPRIGHT-57C**

57° / 135°F



### QUICK RESPONSE

CODE 0126109

**MBK21-QR-UPRIGHT-68C**

68° / 155°F

CODE 0126110

**MBK21-QR-UPRIGHT-79C**

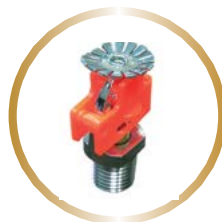
79° / 175°F

CODE 0126111

**MBK21-QR-UPRIGHT-93C**

93° / 200°F

Upright Sprinkler - K 80 - Quick Response Brass or Chrome  
NPT 1/2" or R1/2"



ALL SPRINKLERS ARE PROVIDED  
WITH A PLASTIC PROTECTIVE CASE.  
YOU HAVE TO REMOVE IT AFTER  
INSTALLATION.

## PENDENT UL/FM/ULC



### STANDARD RESPONSE

CODE 0126112

**MBK21-SR-PENDENT-57C**

57° / 135°F



### STANDARD RESPONSE

CODE 0126113

**MBK21-SR-PENDENT-68C**

68° / 155°F

CODE 0126114

**MBK21-SR-PENDENT-93C**

93° / 200°F

Pendent Sprinkler - K 80 - Standard Response Brass or Chrome  
NPT 1/2" or R1/2"

## PENDENT UL/FM/ULC



PENDENT  
SPRINKLERS ARE  
INSTALLED BELOW  
THE PIPES. UPRIGHT  
SPRINKLERS ARE  
INSTALLED ABOVE  
THE PIPES

### QUICK RESPONSE

CODE 0126115

**MBK21-QR-PENDENT-57C**

57° / 135°F



### QUICK RESPONSE

CODE 0126116

**MBK21-QR-PENDENT-68C**

68° / 155°F

CODE 0126117

**MBK21-QR-PENDENT-79C**

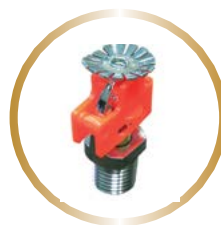
79° / 175°F

CODE 0126118

**MBK21-QR-PENDENT-93C**

93° / 200°F

Upright Sprinkler - K 80 - Quick Response Brass or Chrome  
NPT 1/2" or R1/2"



ALL SPRINKLERS ARE PROVIDED  
WITH A PLASTIC PROTECTIVE CASE.  
YOU HAVE TO REMOVE IT AFTER  
INSTALLATION.



## HORIZONTAL SIDEWALL UL/FM/ULC



### STANDARD RESPONSE

CODE 0126119

**MBK21-SR-HORIZONTAL-57C**

57° / 135°F



### STANDARD RESPONSE

CODE 0126121

**MBK21-SR-HORIZONTAL-68C**

68° / 155°F

CODE 0126124

**MBK21-SR-HORIZONTAL-93C**

93° / 200°F

Horizontal Sidewall - K 80 - Standard Response Brass or Chrome  
NPT 1/2" or R1/2"



## HORIZONTAL SIDEWALL UL/FM/ULC



### QUICK RESPONSE

CODE 0126120

**MBK21-QR-HORIZONTAL-57C**

57° / 135°F



### QUICK RESPONSE

CODE 0126122

**MBK21-QR-HORIZONTAL-68C**

68° / 155°F

CODE 0126123

**MBK21-QR-HORIZONTAL-79C**

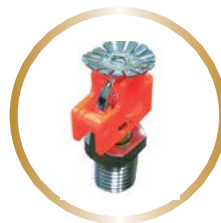
79° / 175°F

CODE 0126125

**MBK21-QR-HORIZONTAL-93C**

93° / 200°F

Upright Sprinkler - K 80 - Quick Response Brass or Chrome  
NPT 1/2" or R1/2"



ALL SPRINKLERS ARE PROVIDED  
WITH A PLASTIC PROTECTIVE CASE.  
YOU HAVE TO REMOVE IT AFTER  
INSTALLATION.



CODE 0125072

**MBK19-WET-ALARM-VALVE-4**

4" Wet Alarm Valve Set with Trim

The Sprinkler Liquid Pressure Control Valve is Essentially a Mechanism which Allows for the Installation of Sprinkler Water Networks.

Gong Included.

CONTROL - ALARM VALVE LIQUID  
TYPE SPRINKLER



CODE 0125073

**MBK19-WET-ALARM-VALVE-6**

6" Wet Alarm Valve Set with Trim

The Sprinkler Liquid Pressure Control Valve is Essentially a Mechanism which Allows for the Installation of Sprinkler Water Networks.

.....; cb[ "bWl XYX"

CONTROL - ALARM VALVE LIQUID  
TYPE SPRINKLER

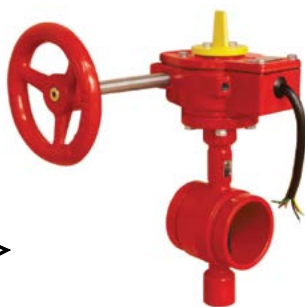


CODE 0125074

**MBK19-WET-MOTOR-GONG**



## CONTROL VALVE ALARM LIQUID TYPE SPRINKLER



**MBK17 - GD - 381X**

AVAILABLE ON SIZES: 2", 2½", 3", 4", 5", 6", 8", 10", 12"

## GROOVED TYPE BUTTERFLY VALVE

### Technical Specifications:

- Maximum Working Pressure: 300PSI (Max. Test Pressure: 600PSI)
- Maximum Working Temperature: 250 °F (120°C)
- Application: Indoor and Outdoor Use
- Double-Seal Disc: Resilient EPDM Coated
- Factory Installed Supervisory Tamper Switch Assembly
- Design Standard: AWWA C515
- Nominal Pressure: 200PSI
- Flange Standard: ASME/ANSI B16.1 Class 125 or ASME/ANSI B16.42 Class 150 or BS EN1092-2 PN16 or GB/T9113.1
- Epoxy resin coating both inside & outside the body Carried Standard

2" 0119366

2 ½" 0119323

3" 0119367

4" 0119368

5" 0119369

6" 0119324

8" 0119370

10" 0119416

12" 0119417



**MBK17 - WD - 371X**

AVAILABLE ON SIZES: 2", 2½", 3", 4", 5", 6", 8", 10", 12"

## WAFER TYPE BUTTERFLY VALVE

### Technical Specifications:

- Maximum Working Pressure: 300PSI (Max. Test Pressure: 600PSI)
- Maximum Working Temperature: 250°F (120°C)
- Application: Indoor and Outdoor Use
- Double-Seal Disc: Resilient EPDM Coated
- Factory Installed Supervisory Tamper Switch Assembly

Design Standard: API609

Groove Standard: ANSI/AWWA C606

Top flange Standard: ISO5211

Test Standard

2" 0119258

2 ½" 0119362

3" 0119363

4" 0119240

5" 0119364

6" 0119250

8" 0119365

10" 0119414

12" 0119415





### MBK17 - Z41

AVAILABLE ON SIZES: 2", 2½", 3", 4", 5", 6", 8", 10", 12"

## GROOVED TYPE OS&Y Gate Valve WP: 200PSI

#### Technical Specifications:

- Technical Specifications:
- Design Standard: AWWA C515
- Nominal Pressure: 200PSI
- Flange Standard: ASME/ANSI B16.1 Class 125 or ASME/ANSI B16.42 Class 150 or BS EN1092-2 PN16 or GB/T9113.1
- Epoxy resin coating both inside & outside the body

2" 0125052

2 1/2" 0119325

3" 0125055

4" 0125053

5" 0119418

6" 0125054

8" 0119419

10" 0119420

12" 0119421



### MBK17 - Z81

AVAILABLE ON SIZES: 2", 2½", 3", 4", 5", 6", 8", 10", 12"

## GROOVED TYPE OS&Y Gate Valve WP: 200PSI

#### Technical Specifications:

- Technical Specifications:
- Design Standard: AWWA C515
- Nominal Pressure: 200PSI
- Groove Standard: Metric or AWWA C606
- Epoxy resin coating both inside & outside the body

2" 0119422

2 1/2" 0119326

3" 0119423

4" 0125056

5" 0119424

6" 0125057

8" 0119425

10" 0119426

12" 0119427



### MBK17 - Z481

AVAILABLE ON SIZES: 2", 2½", 3", 4", 5", 6", 8", 10", 12"



## GROOVED X FLANGED TYPE OS&Y Gate Valve - WP: 200PSI

#### Technical Specifications:

- Design Standard: AWWA C515
- Nominal Pressure: 200PSI
- Flange Standard: ASME/ANSI B16.1 Class 125 or ASME/ANSI B16.42 Class 150 or BS EN1092-2 PN16 or GB/T9113.1
- Groove Standard: Metric or AWWA C606
- Epoxy resin coating both inside & outside the body



### MBK17 - Z41 - 300

AVAILABLE ON SIZES: 2", 2½", 3", 4", 5", 6", 8", 10", 12"

## FLANGED TYPE OS&Y Gate Valve WP: 300PSI

#### Technical Specifications:

- Design Standard: AWWA C515
- Nominal Pressure: 300PSI
- Flange Standard: ASME/ANSI B16.1 Class 125 or ASME / ANSI B16.42 Class 150 or BS EN1092-2 PN16 or GB/T9113.1
- Epoxy resin coating both inside & outside the body

2 1/2" 0119429

3" 0119430

4" 0125065

5" 0119431

6" 0119432

8" 0119433

10" 0119434

12" 0119435



### MBK17 - Z85

AVAILABLE ON SIZES: 2", 2½", 3", 4", 5", 6", 8", 10", 12"

## GROOVED TYPE NRS Gate Valve WP: 200PSI

#### Technical Specifications:

- Design Standard: AWWA C515
- Nominal Pressure: 200PSI
- Groove Standard: Metric or AWWA C606
- Epoxy resin coating both inside & outside the body
- It could also be operated by the handwheel

2" 0119436

2 ½" 0119437

3" 0119438

4" 0125061

5" 0119439

6" 0125062

8" 0125063

10" 0119440

12" 0119441



### MBK17 - Z485

AVAILABLE ON SIZES: 2", 2½", 3", 4", 5", 6", 8", 10", 12"

## GROOVED X FLANGED TYPE NRS Gate Valve - WP: 200PSI

#### Technical Specifications:

- Design Standard: AWWA C515
- Nominal Pressure: 200PSI
- Flange Standard: ASME/ANSI B16.1 Class 125 or ASME/ANSI B16.42 Class 150 or BS EN1092-2 PN16 or GB/T9113.1
- Groove Standard: Metric or AWWA C606
- Epoxy resin coating both inside & outside the body
- It could also be operated by the handwheel



### MBK17 - Z45 - 300

AVAILABLE ON SIZES: 2", 2½", 3", 4", 5", 6", 8", 10", 12"



## FLANGED TYPE NRS Gate Valve WP: 300PSI

#### Technical Specifications:

- Design Standard: AWWA C515
- Nominal Pressure: 300PSI
- Flange Standard: ASME/ANSI B16.1 Class 125 or ASME / ANSI B16.42 Class 150 or BS EN1092-2 PN16 or GB/T9113.1
- Epoxy resin coating both inside & outside the body
- It could be operated by the handwheel



### MBK17 - Z45

AVAILABLE ON SIZES: 2", 2½", 3", 4", 5", 6", 8", 10", 12"

## FLANGED TYPE NRS Gate Valve WP: 200PSI

#### Technical Specifications:

- Design Standard: AWWA C515
- Nominal Pressure: 200PSI
- Flange Standard: ASME/ANSI B16.1 Class 125 or ASME/ANSI B16.42 Class 150 or BS EN1092-2 PN16 or GB/T9113.1
- Epoxy resin coating both inside & outside the body
- It could be operated by the handwheel

2" 0119442

2 ½" 0119443

3" 0119445

4" 0125058

5" 0119444

6" 0125059

8" 0125060

10" 0119446

12" 0119447



### MBK17 - MH - XQH - 300

AVAILABLE ON SIZES: 2", 2½", 3", 4", 5", 6", 8", 10", 12"



2" 0119353

2 ½" 0119354

3" 0119355

4" 0119356

5" 0119448

6" 0119357

8" 0119449

10" 0119450

12" 0119451

## FLANGED TYPE SWING CHECK Valve WP: 300PSI

#### Technical Specifications:

- Design Standard: AWWA C508
- Nominal Pressure: 300PSI
- Flange Standard: ASME/ANSI B16.1 Class 125 or ASME/ANSI B16.42 Class 150 or BS EN1092-2 PN16 or GB/T9113.1
- Epoxy resin coating both inside & outside the body



### MBK17 - MH - XQH - 350G

AVAILABLE ON SIZES: 2", 2½", 3", 4", 5", 6", 8"

2" 0119358

2 ½" 0119327

3" 0119359

4" 0119360

5" 0119452

6" 0119361

8" 0119453

## FLANGED TYPE SWING CHECK Valve WP: 350PSI

#### Technical Specifications:

- Installed in both horizontal or vertical line with upward flow
- Easier and faster to maintain and install



### MBK17 - MH - XQH - 350F

AVAILABLE ON SIZES: 2", 2½", 3", 4", 5", 6", 8"



## GROOVED X FLANGED TYPE SWING CHECK Valve

WP: 350PSI

#### Technical Specifications:

- Installed in both horizontal or vertical line with upward flow
- Easier and faster to maintain and install



CODE 0125069

### MBK17 - QSCZG



## WALL TYPE INDICATOR POST

#### Technical Specifications:

- Upload the upper cover of control lead
- Measure control lead depth, remove the excess part of connector lead and driving rod
- Fit the control rod with full closed valve, turn the position plate to SHUT position
- Load upper cover



CODE 0125068

### MBK17 - ZSQ

SIZES: 4", 5", 6", 8", 10", 12"



## VERTICAL TYPE INDICATOR POST

#### Technical Specifications:

- Upload the upper cover of control lead
- Measure control lead depth, remove the excess part of connector lead and driving rod
- Fit the control rod with full closed valve, turn the position plate to SHUT position
- Load upper cover





CODE **0125045**

### **MBK17 - MH - 1510FA**

Available Sizes: 3'-6", 4', 4'-6", 5", 5'-6", 6", 6'-6"



## **DRY BARREL FIRE HYDRANT**

### **Technical Specifications:**

- Design Standard: AWWA C502
- Nominal Pressure: 250PSI
- One Pumper Nozzle, 4.5-4NH thread.  
Two Hose Nozzles, 2.5-7.5NH threads.  
Other Kinds of Threads are Available
- Flange Connector: ASME B16.5 CLASS150/DIN2501 PN16



CODE **0125067**

### **MBK17 - MH - 1510A**

Available Sizes: 3'-6", 4', 4'-6", 5", 5'-6", 6", 6'-6"



## **DRY BARREL FIRE HYDRANT**

### **Technical Specifications:**

- Design Standard: AWWA C502
- Nominal Pressure: 250PSI
- One Pumper Nozzle, 4.5-4NH thread.  
Two Hose Nozzles, 2.5-7.5NH threads.  
Other Kinds of Threads are Available
- Mechanical Connector: AWWA/ANSI C153/A21.53 6"



CODE 0125034

**MBK281 - 112**



**CERTIFIED ANGLE LANDING VALVES**

Brass Type 1 1/2"



CODE 0125033

**MBK281 - 212**



**CERTIFIED ANGLE LANDING VALVES**

Brass Type 2 1/2"



# FIRE SUPPRESSION SYSTEMS ECO GREEN



## AEROSOL GENERATORS CERTIFIED ACCORDING UL & EN ISO 9094-1/2

MOBIAK Aerosol Generators Are An Innovative Pre-products Designed For Extinguishing A Complete Bed Indoors. Extinguishing Material Is Friendly To The Environment And Is A Substitute For Gaseous Halon As Well As Other Extinguishing Materials. An Aerosol Generator System Is Intended For Extinguishing Fires Of Type A (Solid Surfaces), B. (Liquids) And C (Gases) And Prevents Re-ignition (Causes Hibernation) For E Type Fires Given Mind That The Latter Are Within A Certain Space. Mobiaak Aerosol Generator Series Aims Primarily In The Protection Of Designated Areas; And Closed To Make It Possible Single Amount Of Aerosol Required For A Necessary Period Of Time For The Purpose Of Ensuring Effective Extinguishing. The Material Contained In The Aerosol Generator Determines The Concentration Of Extinguishing Agent, H Which Is Required For Each Type Of Fire Given Volume That Must Be Protected.

The Aerosol Is Created Inside The Container By Combustion Of The Material Contained Therein, Which Was Cooled It Comes From A Special Type Of Flame Fired By One Specially Designed Outlet And Absorbs Heat. The Aerosol Is Generated Locally By Chemical

Reaction That Takes Place In A Container That Does Not Is Pressurized To Produce Inert Particles Of A Dry Powder That Extinguishes The Fire Naturally But Also Chemicals.

When A Fire Is Detected, The Fire Sensors- Transmit An Electrical Signal To The Unit Of The Aerosol, Which In Turn Activates The Electric Igniter.

It Is Then Released Aerosol Extinguishing Material, Which (Completely) Floods The Space, Erasing It Just The Way The Fire.



**Stand Alone Detector  
Activator of Generators**

## MAIN CHARACTERISTICS

- Sites Where There Are No People
- Does Not Destroy Ozone
- Environmentally Friendly
- Non-toxic
- High Efficiency
- Non Pressure Vessels
- No Pipes Or Nozzles Required
- No Fire Alarm Connection Required
- Effective Even In Small Quantities
- Needs No Maintenance
- Convenient - Safe - Simple
- Economical
- Suitable For Type A (Surface) - B - C - E Firesides
- Listed In The Epa-snap List As Powder Aerosol A (Sfe)
- Designed To Meet Nfpa 2010 And Pren15276 Standards

### Responsible Choice to the Environment!

#### Product:

- Non - Corrosive
- Non - Toxic
- Not Harmful Or Irritating
- No Mutagenic Effects On Environment Or Human
- Does Not Harm Ozone (GWP)



# FIRE SUPPRESSION SYSTEMS

## ECO GREEN



**LISTED**  
**EX28232**



**AEROSOL GENERATORS**  
**CERTIFIED ACCORDING UL**  
**& EN ISO 9094-1/2**

Model	A50	A100	A200	A500	A1000	A5000
Quantity of extinguishing material [gr]	50	100	200	500	1000	5000
Evacuation Time [sec]	15	17	27	48	65	70
Dimensions [mm]						
Width	50	60	80	120	120	190
Height	50	60	80	120	120	445
Length	135	170	210	245	320	390
Total Weight [Kg]	0.6	1.2	2.7	11.6	12.5	46
Activation system	1.2 A					
Operating Conditions	- 40°C TO +80°C (- 40°F TO +176°F) 98% RH Max					
Storage Conditions	25°C ± 15°C					
Functionality (after installation)	12 Years					
How to Activate	Electric					
Toxicity	None					
Eco-friendly	No effect on ozone or greenhouse effect (No ODP & GWP)					
Hazard Class	UN1479 Class 5.1					

CODE 0135265

**MBK12 - A50**

CODE 0135268

**MBK12 - A500**

CODE 0135266

**MBK12 - A100**

CODE 0135269

**MBK12 - A1000**

CODE 0135267

**MBK12 - A200**

CODE 0135293

**MBK13 - A5000**

**Responsible Choice to the Environment!**

**Product:**

- Non - Corrosive
- Non - Toxic
- Not Harmful Or Irritating
- No Mutagenic Effects On Environment Or Human
- Does Not Harm Ozone (GWP)



# FIRE PUMP SETS MOBIAK

## AUTOMATIC FIRE PUMP SET



ACCORDING NFPA 20  
REQUIREMENT  
UL LISTED PUMPS



Mobiaak Fire Pumps Sets Are Designed According To Nfpa 20. American Standards Of Firefighting Equipment From High Strength Components Of High Standards, Offering Reliability And Efficiency.

Fire Fighting Units Are Available Fully Assembled Offering Ease Both During Transport And During Installation. Set Is Ready To Operate With Power Plug In Control Panel And Manifold Connection.

**Fire Pumps** are used to supply water for automatic sprinkler systems, standpipes or fire hydrants. NFPA No. 20 classifies fire pumps as split case, vertical turbine, end suction.

End Suction pumps are rated for 100, 200, 250, 300, 400, 450, 500, and 750 GPM.

Split case fire pumps are rated 150,200,300,450,500,750, 1000, 1250, 1500, 2000, 3000, 3500, 4000, 4500, and 5000 GPM.

All fire pumps are rated at 40 pounds per square inch or more of boost.

MOBIAK's Fire Pumps of the type described shall meet the following requirements:

1. Each pump is to be tested hydrostatically for not less than 5 minutes. The test pressure is to be not less than 1.5 times the maximum working pressure of the pump, but in no case less than 250 psi (1724 kPa).
2. A pump shall develop not less than 65 percent of rated total head when discharging at 1.5 times rated capacity. The maximum net pressure for a fire pump shall not exceed 140 percent of rated head.
3. The maximum pump brake horsepower shall not exceed the HP rating its driver, including service factor.

### The Fire Pump Set Consists of:

- Electric Driven Pump or
- Diesel Driven Pump or
- Diesel Pumps and Electrical Pump or

Fire Fighting Water Network Delivers Through Pipes Water At Sprinkler Network, Fire Hose Reel And Cabinets Etc. At Normal Condition The Water Network Is Always Under Specific Pressure. In Automatic Operation Mode, When A Fire Occurs, The Pressure Drop Automatically Starts The Jockey Pump And Only If The Pressure Drop Continues Initiates The Electric Pump. If The Pressure Drop Continues, The Diesel Pump Starts Until The Pressure Of The System Reach The Default Pressure.

The Pumps Of Fire Pump Set Can Be Activated Manually By Specific Button While Each Pump Has Isolation Valves Both For Suction / Discharge, And Also Non Return Valve.

The Extinguishing Set (Pumps & Pump Motors, Mechanical Components And Electrical Panel) Is Mounted On A Rigid Steel Base Construction. Upon Special Request We Can Supply UL Certified Fire Pump Sets Or EN12845 Certified Fire Pump Sets Or Non Certified Fire Pump Sets.

### Other Parts to be Included in the Fire Pump Set:

- Pressure Tank Of Various Capacities And Operating Pressures
- Electrical Control Panel With Automatic Function
- Control Parts (F.e., Check Valves, Pressure Gauges, Pressure Switches, Valves etc.)





*Value in Safety... Invest in Quality!*



YEARS OF EXPERIENCE  
MOBIAK S.A. 1977-2021



TEST AND APPROVED  
ACCORDING  
SASO STANDARDS  
4789462098