

NETWORK VIDEO CAMERA

DATA SHEET

FENNEC SERIES

THE ALTERNATIVE SOLUTION



BY



EYEBALL

TEBFDAIP8MP28-AI-L
TEBFDAIP8MP28-AI-L-B



8MP @30FPS

Onvif® COMPLIANT PROFILE S/G/T

DWDR / IP66

FIX 2.8MM LENS

BUILT-IN MICROPHONE

POE (POWER OVER ETHERNET)

AI FEATURES

HUMAN/VEHICULE DETECTION
PERIMETER DETECTION
FACE DETECTION / FACE RECOGNITION
LINE CROSSING DETECTION

IR 30M ARRAY LED

3 YEARS WARRANTY



EYEBALL

TEBFDAIP8MP28-AI-L & TEBFDAIP8MP28-AI-L-B



VIDEO	
IMAGING DEVICE	1/2.7"
EFFECTIVE PIXELS	8MP 3840(H)×2160(V)
SCANNING SYSTEM	PROGRESSIVE CMOS
MIN. ILLUMINATION	COLOR 0.1LUX @ F1.2(AGC ON) B/W 0 LUX @ IR ON

OPERATIONAL	
IR VIEWABLE LENGTH	UP TO 30M
CAMERA TITLE	ON/OFF
DAY & NIGHT	IR CUT FILTER WITH AUTO SWITCH (DAY/NIGHT/AUTO/SCHEDULE)
BACKLIGHT COMPENSATION	OFF/ON (5 ZONE)
WIDE DYNAMIC RANGE	DWDR
DIGITAL NOISE REDUCTION	3D DNR
MOTION DETECTION	OFF/ON (8 LEVEL)
PRIVACY MASKING	OFF/ON (4 ZONE, RECTANGLE)

GAIN CONTROL	AUTO
WHITE BALANCE	AUTO/MANUAL
ELECTRONIC SHUTTER SPEED	1/5 ~ 1/20000S
FLIP / MIRROR	FLIP/ROTATION
ON-BOARD STORAGE	MICRO SD SLOT, UP TO 256GB
ALARM	NA
AUDIO	BUILT-IN MICROPHONE
HARDWARE RESET	✓ YES
SMART FEATURE	NA

LENS TYPE	
FOCAL LENGTH (ZOOM RATIO)	2.8MM
MAX. APERTURE RATIO	F NO. 1.6
ANGULAR FIELD OF VIEW	HORIZONTAL: 110°, VERTICAL: 58°, DIAGONAL: 132°
MIN. OBJECT DISTANCE	1.8MM
LENS TYPE	FIXED (M12)

RESOLUTION	
MAINSTREAM @20FPS 8MP(3840X2160), 5MP(2592X1944, 3072X1728), 4MP(2592X1520), 3MP(2304X1296), 1080P(1920X1080), 960P(1280*960),720P(1280X720)	
SUBSTREAM @20FPS 720P(1280X720), VGA(640X480), QVGA(320X240)	
MOBILESTREAM @20FPS VGA(640X480), QVGA (320X240)	

VIDEO QUALITY ADJUSTMENT	8KBPS ~ 16MBPS
BITRATE CONTROL METHOD	CBR/VBR
STREAMING CAPABILITY	TRIPLE-STREAM (MAIN/SUB/MOBILE)
IP	IPV4
STREAMING METHOD	UNICAST/MULTICAST
MAX. USER ACCESS	MAX 2 (ADMIN+USER)
APPLICATION PROGRAMMING INTERFACE	ONVIF(PROFILE S/G/T)
WEB VIEWER	IE10/11 SAFARI V12.1 ABOVE GOOGLE CHROME V.57 ABOVE FIREFOX V.52 ABOVE EDGE V.79 ABOVE

MAX. FRAMERATE
50HZ: 20FPS 3840X2160

PROTOCOLS				
TCP/IP	HTTP	DHCP	DNS	DDNS
RTP	RTSP	SMTP	NTP	UPNP
SNMP	HTTPS	FTP		

SECURITY	
IP ADDRESS FILTER	COMPLICATED PASSWORD
AUTHENTICATED USERNAME AND PASSWORD	

ELECTRICAL	
INPUT VOLTAGE / CURRENT	D12V/POE(IEEE802.3AF)
POWER CONSUMPTION	(IR OFF) 3W/4W - (IR ON) 5W/7W

MECHANICAL	
COLOR / MATERIAL	WHITE/METAL
DIMENSION (WXHXD)	Ø100X90MM
WEIGHT	APPR 420G

NETWORK	
ETHERNET	RJ45 (10/100BASE-T)
VIDEO COMPRESSION FORMAT	H.265/H.264

ENVIRONMENTAL	
OPERATING CONDITIONS -30~+55°C LESS THAN ≤ 95% RH	INGRESS PROTECTION IP66
STORAGE CONDITIONS -30~+60°C LESS THAN ≤ 95% RH	

DIMENSIONS		

2021 GLOBAL SURVEILLANCE DEVELOPMENT, GSD GROUP AND GSD ARE REGISTERED TRADEMARKS OF GLOBAL SURVEILLANCE DEVELOPMENT GROUP, INC. IN CANADA AND / OR OTHER COUNTRIES. WE RESERVE THE RIGHT TO CHANGE THE DESIGN AND SPECIFICATIONS OF THE PRODUCT WITHOUT NOTICE AND WITHOUT INCURRING ANY OBLIGATION.



TEBFDAIP8MP28-AI-L
TEBFDAIP8MP28-AI-L-B

ACCESSORIES



TEBBASE1
TEBBASE1-B
JUNCTION BOX

WMB2
WMB2-B
WALL MOUNT



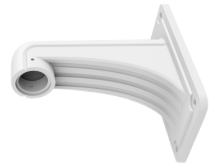
OR

EB3BASE4-G
GOOSE MOUNT



+

WMB6
WALL MOUNT



COMPLEMENTARY ACCESSORIES



CMB6
CEILING MOUNT BRACKET



PMB6
POLE MOUNT BRACKET



COMB6
CORNER MOUNT BRACKET



EXT-4POE
EXTENDER 4 PORTS POE



INJPOE-25W
INJECTOR POE 25WATTS



IP-COAX-300M
IP OVER COAX EXT