

NETWORK VIDEO CAMERA

DATA SHEET

FENNEC SERIES

THE ALTERNATIVE SOLUTION



EYEBALL

TEBFDATVIP5MP28-AI
TEBFDATVIP5MP28-AI-B

TOTAL VIEW MODE PRESENTS BRILLIANT COLORFUL IMAGES IN COMPLETE DARKNESS
DAY/NIGHT MODE PROVIDES PURE BLACK & WHITE IMAGES
SCHEDULE MODE ALLOWS TO PROGRAM YOUR SPECIFIC NEEDS



5MP @30FPS

Onvif® COMPLIANT PROFILE S/G/T

WDR / IP66

FIX 2.8MM LENS

BUILT-IN MICROPHONE

POE (POWER OVER ETHERNET)

AI FEATURES

HUMAN/VEHICULE DETECTION
PERIMETER DETECTION
FACE DETECTION / FACE RECOGNITION
LINE CROSSING DETECTION

IR 30M ARRAY LED - WARM LIGHT 25M

3 YEARS WARRANTY



EYEBALL

TEBFDATVIP5MP28-AI & TEBFDATVIP5MP28-AI-B



VIDEO	
• IMAGING DEVICE	1/2.7"
• EFFECTIVE PIXELS	5MP 2880 (H) X1620 (V)
• SCANNING SYSTEM	PROGRESSIVE CMOS
• MIN. ILLUMINATION	COLOR 0.05LUX @ F1.2(AGC ON) B/W 0 LUX @ IR ON

OPERATIONAL	
• IR VIEWABLE LENGTH	UP TO 30M
• WARMLIGHT VIEWABLE LENGTH	UP TO 25M
• CAMERA TITLE	ON/OFF
• DAY & NIGHT	FULL COLOR MODE/ DAY&NIGHT MODE/SCHEDULE
• BACKLIGHT COMPENSATION	OFF/ON (5 ZONE)
• WIDE DYNAMIC RANGE	WDR
• DIGITAL NOISE REDUCTION	3D DNR
• MOTION DETECTION	OFF/ON (8 LEVEL)
• PRIVACY MASKING	OFF/ON (4 ZONE, RECTANGLE)
• GAIN CONTROL	AUTO
• WHITE BALANCE	AUTO/MANUAL/INDOOR
• ELECTRONIC SHUTTER SPEED	1/5 ~ 1/20000S
• FLIP / MIRROR	FLIP/ROTATION
• ON-BOARD STORAGE	MICRO SD SLOT, UP TO 256GB
• ALARM	NA
• AUDIO	BUILT-IN MICROPHONE
• HARDWARE RESET	✓ YES
• SMART FEATURE	PID,LCD,PD/VD,SOD,CC,CD, QD,HEAT MAP,RSD,LPD,FD

LENS TYPE	
• FOCAL LENGTH (ZOOM RATIO)	2.8MM
• MAX. APERTURE RATIO	F NO. 1.0
• ANGULAR FIELD OF VIEW	HORIZONTAL: 110°, VERTICAL: 57.8°, DIAGONAL: 131.6°
• MIN. OBJECT DISTANCE	2.0MM
• LENS TYPE	M12

RESOLUTION	
MAINSTREAM	
5MP(2880X1620),4MP(2592X1520) 3MP(2304X1296),1080P(1920X1080) 960P(1280X960),720P(1280X720)	
SUBSTREAM	
720P(1280X720),VGA(640X480),QVGA(320X240)	
MOBILESTREAM	
VGA(640X480), QVGA(320X240)	

• VIDEO QUALITY ADJUSTMENT	8KBPS ~ 8MBPS
• BITRATE CONTROL METHOD	CBR/VBR
• STREAMING CAPABILITY	TRIPLE-STREAM (MAIN/SUB/MOBILE)
• IP	IPV4
• STREAMING METHOD	UNICAST/MULTICAST
• MAX. USER ACCESS	MAX 7 (ADMIN+USER)
• APPLICATION PROGRAMMING INTERFACE	ONVIF(PROFILE S/G/T)
• WEB VIEWER	IE8,9,10,11, CHROME 44/LOWER, FIREFOX 51/LOWER, SAFARI 11/LOWER

MAX. FRAMERATE	
50HZ: 25FPS @5MP/4MP/3MP/2MP/960P/720P/VGA/QVGA	
60HZ: 30FPS @5MP/4MP/3MP/2MP/960P/720P/VGA/QVGA	

PROTOCOLS				
TCP/IP	HTTP	DHCP	DNS	DDNS
RTP	RTSP	SMTP	NTP	UPNP
SNMP	HTTPS	FTP		

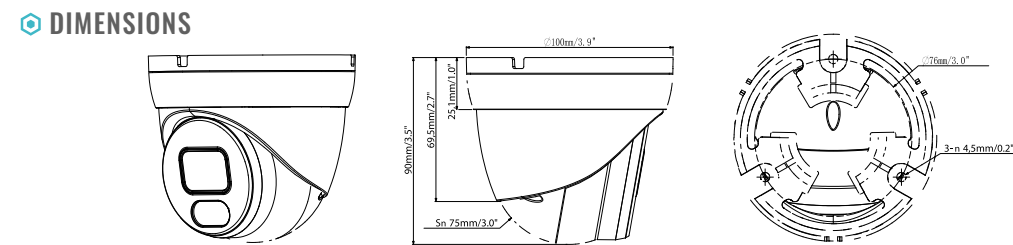
SECURITY	
IP ADDRESS FILTER	COMPLICATED PASSWORD
AUTHENTICATED USERNAME AND PASSWORD	

ELECTRICAL	
• INPUT VOLTAGE / CURRENT	D12V/POE(IEEE802.3AF)
• POWER CONSUMPTION	7W

MECHANICAL	
• COLOR / MATERIAL	WHITE/METAL
• DIMENSION (WXHXD)	Ø100X90MM
• WEIGHT	APPR 417.5G

NETWORK	
• ETHERNET	RJ45 (10/100BASE-T)
• VIDEO COMPRESSION FORMAT	H.265/H.264

ENVIRONMENTAL	
OPERATING CONDITIONS -30~+55°C LESS THAN ≤ 95% RH	INGRESS PROTECTION IP66
STORAGE CONDITIONS -30~+60°C LESS THAN ≤ 95% RH	



2021 GLOBAL SURVEILLANCE DEVELOPMENT, GSD GROUP AND GSD ARE REGISTERED TRADEMARKS OF GLOBAL SURVEILLANCE DEVELOPMENT GROUP, INC. IN CANADA AND / OR OTHER COUNTRIES. WE RESERVE THE RIGHT TO CHANGE THE DESIGN AND SPECIFICATIONS OF THE PRODUCT WITHOUT NOTICE AND WITHOUT INCURRING ANY OBLIGATION.



TEBFDATVIP5MP28-AI
TEBFDATVIP5MP28-AI-B

ACCESSORIES



 **TEBBASE1**
TEBBASE1-B
JUNCTION BOX

 **WMB2**
WMB2-B
WALL MOUNT



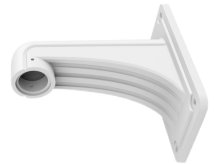
OR

 **EB3BASE4-G**
GOOSE MOUNT



+

 **WMB6**
WALL MOUNT



COMPLEMENTARY ACCESSORIES



 **CMB6**
CEILING MOUNT BRACKET



 **PMB6**
POLE MOUNT BRACKET



 **COMB6**
CORNER MOUNT BRACKET



 **EXT-4POE**
EXTENDER 4 PORTS POE



 **INJPOE-25W**
INJECTOR POE 25WATTS



 **IP-COAX-300M**
IP OVER COAX EXT