

SMALL BULLET

B2IP2MP28-PIR-32G-L



2MP - 30FPS

Onvif® COMPLIANT PROFILE S/G

DWDR / IP66

FIX (2.8MM) LENS

PIR / 32G SD CARD

POE (POWER OVER ETHERNET)

H.264 & H.265 CODEC

20M (ARRAY) LED

3 YEARS WARRANTY



SMALL BULLET

MODEL: B2IP2MP28-PIR-32G-L



• RESOLUTION 2MP 1920(H)X1080(V)

• IMAGE SENSOR 1/2.7" PROGRESSIVE CMOS

• MIN. ILLUMINATION 0.05LUX@F1.2(AGC ON),0LUX WITH IR

• SHUTTER 1/5S – 1/20000S/AUTO

• SLOW SHUTTER SUPPORT

• LENS 2.8 MM H.FOV: 103°

• DAY & NIGHT IR CUT FILTER WITH AUTO SWITCH (DAY/NIGHT/AUTO/SCHEDULE)

• DIGITAL NOISE REDUCTION: 3D DNR

• WDR DIGITAL WDR

• S/N RATIO 40DB

• VIDEO BIT RATE 256KBPS ~ 8MBPS

• ASPECT RATIO 16:09

• STREAM DUAL

• WHITE BALANCE AUTO/INDOOR/MANUAL

• BLC SUPPORT

• AGC OFF/LOW/MID/HIGH

• PRIVACY MASK SUPPORT

• VIDEO COMPRESSION H.265/H.264

• VIDEO ANALYTICS N/A

• SYSTEM COMPATIBILITY ONVIF(VER 2.6, PROFILE S, PROFILE G)

• INTERFACE RJ45 10M / 100M ETHERNET INTERFACE X1

• LED 2PCS (ARRAY)

• IR RANGE UP TO 20M

• SD STORAGE YES, 32 GO

• ALARM TRIGGER NO

• WATER PROOF IP66

• AUDIO **TWO-WAY AUDIO**
(BUILT-IN MIC & SPEAKER)

• POWER SUPPLY DC 12V/POE

• VIDEO OUTPUT NO

• CONSUMPTION ≤ 4.2W

• RESET BUTTON NO

• DIMENSION ϕ 71.11MM X138.27MM

• POE YES

• WEIGHT APPR. 325G

RESOLUTION

• MAINSTREAM (1 ~ 25 FPS)

1080P (1920X1080)

960P (1280X960)

720P (1280X720)

• SUBSTREAM

VGA (640X480) | QVGA (320X240)

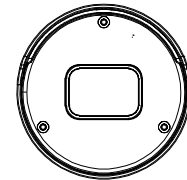
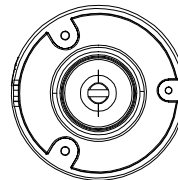
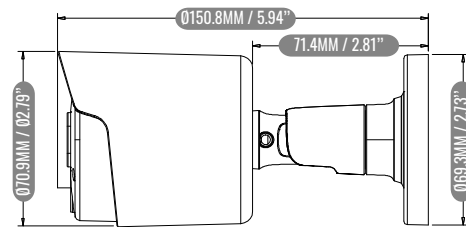
IMAGE SETTINGS

FLIP	CONTRAST
SATURATION	HUE
BRIGHTNESS	SHARPNESS ADJUSTABLE

PROTOCOLS

TCP/IP	HTTP	DHCP	DNS	DDNS	RTP	RTSP
PPPOE	SMTP	NTP	UPNP	SNMP	HTTPS	FTP

DIMENSIONS



STORAGE TEMPERATURE
-30~+60°C

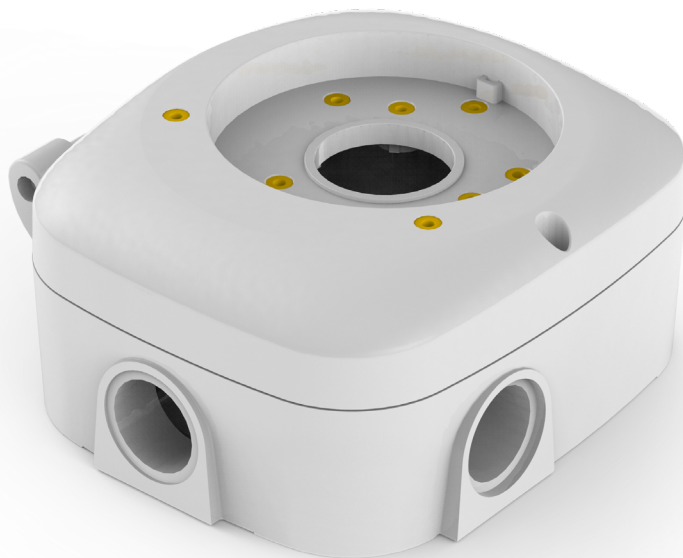
OPERATING TEMPERATURE
-30~+55°C

2021 GLOBAL SURVEILLANCE DEVELOPMENT, GSD GROUP AND GSD ARE REGISTERED TRADEMARKS OF GLOBAL SURVEILLANCE DEVELOPMENT GROUP, INC. IN CANADA AND / OR OTHER COUNTRIES. WE RESERVE THE RIGHT TO CHANGE THE DESIGN AND SPECIFICATIONS OF THE PRODUCT WITHOUT NOTICE AND WITHOUT INCURRING ANY OBLIGATION.



B2IP2MP28-PIR-32G-L

ACCESSORIES



 **B6BASE1**
JUNCTION BOX

COMPLEMENTARY ACCESSORIES



 **SWCPOE-AT**
SWITCH 5,9,18&28 PORTS



 **PMB6**
POLE MOUNT BRACKET



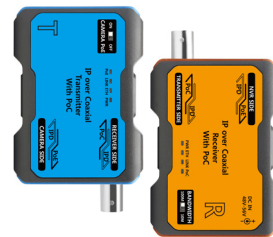
 **COMB6**
CORNER MOUNT BRACKET



 **EXT-4POE**
EXTENDER 4 PORTS POE



 **INJPOE-25W**
INJECTOR POE 25WATTS



 **IP-COAX-300M**
IP OVER COAX EXT